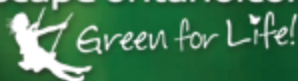


PROFESSIONAL DEVELOPMENT

HORTICULTURAL TRADES ASSOCIATION
landscape ontario.com



SEMINAR GUIDE 2021-2022



LEARN, GROW, THRIVE

LEARN, GROW, THRIVE

Professional Development Seminars and the New LO Academy

PROFESSIONAL DEVELOPMENT SEMINARS

Providing your team with the opportunity to learn helps them perform better in their role, as well as prepare for positions with greater responsibility. Employers that offer professional development opportunities increase their ability to attract motivated and skilled candidates, while retaining their top talent.

To assist you with this, Landscape Ontario has a full professional development program to ensure your team remains engaged and productive.

For 2022, we're excited to offer a return to in-class seminars. And new to the guide this year is an 'at-a-glance' section (page 9) that outlines online learning opportunities.

While many of our popular seminars are returning, we've also added a variety of new seminars and online learning topics, covering: sales, business mistakes, safety, team leaders, natural stone, Dynascape, nematodes, soil, caterpillars, shade gardening and invasive species, just to name a few.

You will also notice a new look to this year's guide, although smaller in size it still provides you with all the answers.

Book your spot now as seminars will fill up quickly this year. And be sure to register by Dec. 31, 2021 to qualify for a 10 per cent early booking discount!

For more details and to register, visit ***[HortTrades.com/seminars](https://horttrades.com/seminars)***.



THE NEW LO ACADEMY

To make your training goals easier, we are introducing the new LO Academy. It's a direct route to Landscape Ontario's horticulture business training and development opportunities.

The LO Academy provides business owners and team members with many opportunities for training, skills upgrading, networking and ways to improve your business throughout the year and across Ontario.

See ***HortTrades.com/LO-Academy*** for more details.

TABLE OF CONTENTS

Events	4
Certification	6
Apprenticeship	7
Membership	8
Online Learning	9
Seminar Registration Form	30

SEMINAR TOPICS

Business Development.....	14
Certification Prep Seminars.....	16
Equipment	16
Grounds Maintenance.....	19
Irrigation.....	20
Integrated Pest Management (IPM)	22
Landscape Construction.....	23
Landscape Design.....	24
Plants.....	26
Safety and First Aid	26
Trees	27
Water Gardening	28

**LEARN,
GROW,
THRIVE.**

[HORTTRADES.COM/LO-ACADEMY](https://horttrades.com/lo-academy)

CONGRESS

SECTORS

CHAPTERS



PEER TO PEER

PROFESSIONAL
DEVELOPMENT

SYMPOSIUMS

CERTIFICATION PROGRAMS

Together with CNLA, Landscape Ontario is committed to recognizing standards in the landscape horticulture industry. Sector-specific certification programs help to promote competence and professional practices, resulting in recognition of competence and professionalism by consumers.

CERTIFIED LANDSCAPE HORTICULTURIST TECHNICIAN (CLHT)

This program allows individuals to demonstrate their competence in a variety of industry tasks. The Certified Landscape Horticulturist Technician program is for Softscape Installation, Hardscape Installation, Turf Maintenance, Ornamental Maintenance, and Irrigation professionals.

CERTIFIED LANDSCAPE HORTICULTURIST MANAGER (CLHM)

This program is designed for owners and managers wishing to prove or improve their business skills. The Certified Landscape Horticulturist Manager designation denotes competence in the challenging task of managing a successful business today.

CERTIFIED LANDSCAPE DESIGNER (CLD)

Becoming a Certified Landscape Designer provides a means of proving to your clients that you not only have the necessary education and industry experience, but that you have written and passed an intensive exam and portfolio review process recognized across Canada.



For more information contact CNLA at certification@cnla-acpp.ca or 1-888-446-3499

RECERTIFICATION

Individuals currently holding a Landscape Horticulture Certification Program (LHCP) designation are required to maintain their status by submitting continuing education units (CEUs) to re-certify every two years.

Landscape Ontario Professional Development seminars are eligible for continuing credits (**CECs/CEUs**).

Individuals holding a certification (see acronyms examples below) should speak to their appropriate Association or refer to

cnla.ca/training/recertification for more recertification details

CLHT, CLD, CLHM, ISA, IPM, GRP, FLP, WSIP

For information on recertification, tests, judging, sponsorship opportunities and more, visit cnlagetcertified.ca

REGISTER NOW START TRAINING TODAY!

What is Apprenticeship?

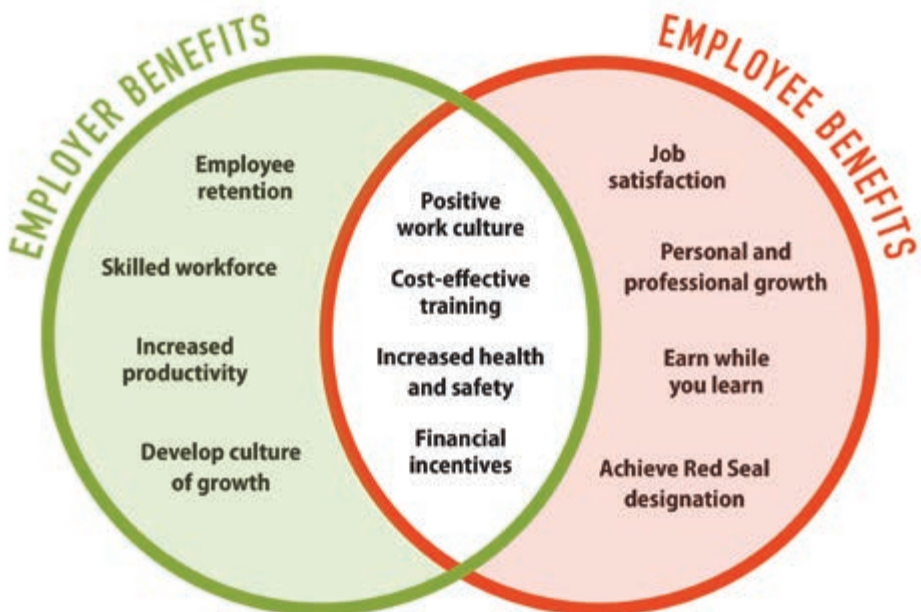
Apprenticeship is a recognized form of post-secondary education and training that provides hands-on, industry-specific knowledge and skills to employees in the profession.

Apprentices learn skills in the classroom during the winter months (at any of four colleges across the province) and work on-the-job with employers to complete a skills training log book.


Upon successful completion of the program, apprentices become **Red Seal certified!**

REGISTRATION IS EASY

Let the LO Apprenticeship Team support you from start to finish.
To register, or for more information: info@horticulturetechnician.ca



Your Landscape Ontario Membership Working for you!



Peer to Peer
Program

ATTEND THE NEXT PEER 2 PEER SESSION AND
CONNECT WITH GREEN PROFESSIONALS LIKE
YOURSELF: HORTTRADES.COM/P2P

JOIN A CHAPTER BOARD OR SECTOR GROUP
AND IMPACT YOUR LOCAL EVENTS:
HORTTRADES.COM/COMMUNITY



STAY UP-TO-DATE ON ALL CHAPTER & SECTOR
EVENTS AT HORTTRADES.COM/EVENT

NOT A MEMBER YET? SIGN- UP TODAY AT
HORTTRADES.COM/BECOME-A-MEMBER



CONNECT WITH US ABOUT YOUR LANDSCAPE ONTARIO MEMBERSHIP
AT MEMBERSHIP@LANDSCAPEONTARIO.COM OR 1-800-265-5656

2021-2022 ONLINE LEARNING

SESSION LINEUP AT-A-GLANCE

Sessions are listed in date and time order. For full description details and pricing see HortTrades.com/Professional-Development-Online

NOVEMBER - DECEMBER 2021 ONLINE SESSIONS

SESSION	DATE AND TIME	PRESENTER
THERE ARE NO INDOOR PLANTS	Tues, November 23 10:00 - 11:00 a.m.	Ken Brown, Gardening Enjoyed
INVASIVE SPECIES IN ONTARIO	Wed, November 24 10:00 - 11:00 a.m.	Jodi Healy, Horticulturist
TREAT THE COMPANY AS A COMPANY AND THE FAMILY AS THE FAMILY	Thurs, November 25 10:00 - 11:00 a.m.	Phil Kriszenfeld, Transitions Mediation and Consulting Group
JAPANESE STYLE GARDENS	Tues, December 7 10:00 - 11:00 a.m.	Robert Pavlis, Aspen Grove Gardens
INTEGRATING WATER FEATURES SERIES BY RANDY TUMBER <i>*Different price</i>	Session package includes design, construction, rocks, and placement along with liners and leaks. Sessions can also be viewed individually: • Designing - Successfully Integrating Water Features Into the Landscape • Construction - Successfully Integrating Water Features Into the Landscape • Rocks and Placement - Successfully Integrating Water Features Into the Landscape • Liners and Leaks - Successfully Integrating Water Features Into the Landscape	

JANUARY 2022 ONLINE SESSIONS

MEASURING THE BOSS'S PERFORMANCE	Wed, January 26 10:00 - 11:00 a.m.	Jacki Hart, Consulting By Hart
GROW YOUR BUSINESS BY KNOWING YOUR NUMBERS	Thurs, January 27 10:00 - 11:00 a.m.	Jacki Hart, Consulting By Hart
PLANT NAMES AND WHY THEY ARE IMPORTANT	Fri, January 28 10:00 - 11:00 a.m.	Jodi Healy, Horticulturist
INTRODUCTION TO DYNASCAPE - THREE PART SERIES <i>*Different price</i>	Mon, January 31 1:00 - 2:00 p.m.	Beth Edney, Designs By the Yard
	Mon, February 7 1:00 - 2:00 p.m.	
	Mon, February 14 1:00 - 2:00 p.m.	

2022 ONLINE LEARNING

FEBRUARY 2022 ONLINE SESSIONS

SESSION	DATE AND TIME	PRESENTER
KNOWING THE RIGHT SOIL TO PICK	Tues, February 1 10:00 - 11:00 a.m.	Robert Pavlis, Aspen Grove Gardens
LIGHTING 101: LIGHT AND PHOTOMETRICS	Tues, February 1 1:00 - 2:00 p.m.	John Higo, Turf Care Products Canada
A TEAM LIKE NO OTHER - HOW TO GET THERE	Wed, February 2 10:00 - 11:00 a.m.	Jacki Hart, Consulting By Hart
CREATING YOUR SALES SUCCESS FORMULA	Wed, February 2 1:00 - 2:00 p.m.	Andrew Wall, Sandler Training
ANNUALS - THE NEW, THE FAVOURITES, THE UNDERAPPRECIATED, AND THE MIMICS	Thurs, February 3 10:00 - 11:00 a.m.	Rodger Tschanz, University of Guelph
LANDSCAPE DRAINAGE: GUIDELINES AND TERMINOLOGY	Thurs, February 3 1:00 - 2:00 p.m.	Tony Lombardi, Dr. Landscape
COMMON NATIVE PLANTS AND THEIR ID BY PLANT NAME	Fri, February 4 10:00 - 11:00 a.m.	Jodi Healy, Horticulturist
AN INTRODUCTION TO TREE BIOLOGY, HEALTH AND STRESS	Fri, February 4 1:00 - 2:00 p.m.	Todd Irvine, MFC, MA, ISA Certified Arborist
SIMPLY SHRUBS	Mon, February 7 10:00 - 11:00 a.m.	Sean James, Sean James Consulting
DIG A LITTLE DEEPER, UNDERSTANDING SOILS	Tues, February 8 10:00 - 11:00 a.m.	Robert Pavlis, Aspen Grove Gardens
COMMON TREES AND SHRUBS AND THEIR ID BY PLANT NAME	Wed, February 9 10:00 - 11:00 a.m.	Jodi Healy, Horticulturist
BUILDING WINNING TEAMS: KEEP THEM AND TRAIN THEM TO SUCCEED	Thurs, February 10 10:00 - 11:00 a.m.	Rob Redden, In-Lite Design Corporation
WHAT WE USED TO KILL: CATERPILLARS AND THEIR HOST PLANTS	Mon, February 14 10:00 - 11:00 a.m.	Sean James, Sean James Consulting
LIGHTING 101: BASIC DESIGN TECHNIQUES	Tues, February 15 10:00 - 11:00 a.m.	John Higo, Turf Care Products Canada

SESSION LINEUP AT-A-GLANCE

Sessions are listed in date and time order. For full description details and pricing see HortTrades.com/Professional-Development-Online

FEBRUARY 2022 ONLINE SESSIONS

SESSION	DATE AND TIME	PRESENTER
TEAM LEADER TRAINING - THREE PART SERIES <i>*Different price</i>	Tues, February 15 1:00 - 2:00 p.m. Thurs, February 17 1:00 - 2:00 p.m. Tues, February 22 1:00 - 2:00 p.m.	Kater Seaver, Kate's Garden
HOW TO BUILD A HAPPY, PRODUCTIVE TEAM	Wed, February 16 1:00 - 2:00 p.m.	Andrew Wall, Sandler Training
SHADE GARDENING IS ACTUALLY AN OPPORTUNITY	Wed, February 16 10:00 - 11:00 a.m.	Ken Brown, Gardening Enjoyed
THE HOW-TO'S OF TREE SELECTION, PLANTING AND SPACING	Thurs, February 17 10:00 - 11:00 a.m.	Todd Irvine, MFC, MA, ISA Certified Arborist
GROUNDCOVERS, LIVING ALTERNATIVES TO ASPHALT	Tues, February 22 10:00 - 11:00 a.m.	Ken Brown, Gardening Enjoyed
PLANT CHOICES: NATIVAR, EXOTIC, INVASIVE. WORKING TOWARD ENVIRONMENTALLY SUSTAINABLE LANDSCAPES	Wed, February 23 10:00 - 11:00 a.m.	Cathy Kavassalis, Horticulturist
COMPANY CULTURE: THE KEY TO EMPLOYEE LOYALTY - THREE PART SERIES <i>*Different price</i>	Wed, February 23 1:00 - 2:00 p.m. Mon, February 28 1:00 - 2:00 p.m. Fri, March 4 10:00 - 11:00 a.m.	Greg Wildeboer, Whispering Pines Landscape
ANNUALS, PERENNIALS, NATIVES, AND TROPICALS FOR CREATIVE CONTAINER APPLICATIONS	Thurs, February 24 10:00 - 11:00 a.m.	Rodger Tschanz, University of Guelph
LANDSCAPE DESIGNER'S STUDIO - PRINCIPLES <i>*Different price</i>	Thurs, February 24 9:00 - 3:30 p.m.	Beth Edney, Design By the Yard
NEW: A blended session/seminar. Participants can choose to participate online or attend in class at LO.		
INTRODUCTION TO GROWING VEGETABLES	Fri, February 25 10:00 - 11:00 a.m.	Jodi Healy, Horticulturist
PROUD OF MY PRUNING	Mon, February 28 10:00 - 11:00 a.m.	Sean James, Sean James Consulting

2022 ONLINE LEARNING

MARCH 2022 ONLINE SESSIONS

SESSION	DATE AND TIME	PRESENTER
LIGHTING 101: INSTALLATION	Tues, March 1 10:00 - 11:00 a.m.	John Higo, Turf Care Products
UNWANTED WEEDS AND THEIR ID BY PLANT NAME	Wed, March 2 10:00 - 11:00 a.m.	Jodi Healy, Horticulturist
PROTECTING TREES DURING LANDSCAPE CONSTRUCTION AND MAINTENANCE	Wed, March 2 1:00 - 2:00 p.m.	Todd Irvine, MFC, MA, ISA Certified Arborist
LEADING YOUR COMPANY TO GROW AND PROSPER	Thurs, March 3 10:00 - 11:00 a.m.	Andrew Wall, Sander Training
AGGREGATES, SOIL CONDITIONS, AND DRAINAGE EFFICIENCY	Thurs, March 3 1:00 - 2:00 p.m.	Tony Lombardi, Dr.Landscape
WHAT TO DO WITH A DOWNPOUR	Mon, March 7 10:00 - 11:00 a.m.	Sean James, Sean James Consulting
LANDSCAPE CONSTRUCTION DRAWING - TWO PART SERIES <i>*Different price</i>	Mon, March 7 1:00 - 2:00 p.m. Mon, March 14 1:00 - 2:00 p.m.	Beth Edney, Designs By the Yard
UNDERSTANDING AND THE NOT-SO-COMMON PERENNIAL	Tues, March 8 10:00 - 11:00 a.m.	Robert Pavlis, Aspen Grove Gardens
5 KEY STEPS TO AN EFFICIENT MORNING ROLLOUT	Tues, March 8 1:00 - 2:00 p.m.	Greg Wildeboer, Whispering Pines Landscaping
COMMON PERENNIALS AND THEIR ID BY PLANT NAME	Wed, March 9 10:00 - 11:00 a.m.	Jodi Healy, Horticulturist
BUG AND DISEASES ARE ALWAYS A CHALLENGE	Thurs, March 10 10:00 - 11:00 a.m.	Ken Brown, Gardening Enjoyed

SESSION LINEUP AT-A-GLANCE

Sessions are listed in date and time order. For full description details and pricing see HortTrades.com/Professional-Development-Online

MARCH 2022 ONLINE SESSIONS

SESSION	DATE AND TIME	PRESENTER
SOAK AWAY PITS AND SUBGRADE DRAINAGE SYSTEMS	Thurs, March 10 1:00 - 2:00 p.m.	Tony Lombardi, Dr. Landscape
CHAINSAW MAINTENANCE	Fri, March 11 10:00 - 11:00 a.m.	Representative from Total Rescue
STRATEGIC PLANNING: TAKE YOUR BUSINESS TO A NEW AND BETTER PLACE	Mon, March 14 10:00 - 11:00 a.m.	Peter Wright, The Planning Group
INVASIVE SPECIES IN ONTARIO	Wed, March 16 10:00 - 11:00 a.m.	Jodi Healy, Horticulturist
THE UNDISCOVERED WORLD OF DYNASCAPE: SOCIAL/LEARNING EVENT <i>*Different price</i>	Mon, March 21 1:00 - 4:00 p.m.	Beth Edney, Designs By the Yard
THE THREE TENORS + 1	Tues, March 22 10:00 - 11:00 a.m.	Ken Brown, Gardening Enjoyed
DESIGNING VEGETABLE GARDENS FOR URBAN SPACES	Wed, March 23 10:00 - 11:00 a.m.	Jodi Healy, Horticulturist
LANDSCAPE DESIGN PRACTICE-CHARGING FOR DESIGNS	Mon, March 28 1:00 - 2:00 p.m.	Beth Edney, Designs By the Yard
THE VEGETABLE - PLANTING AND MAINTENANCE	Wed, March 30 10:00 - 11:00 a.m.	Jodi Healy, Horticulturist

SEMINARS

Refer to HortTrades.com/Seminars for complete seminar details.

BUSINESS DEVELOPMENT

SEMINAR	DESCRIPTION	LOCATION AND INFORMATION	FEE <i>(HST not included)</i>
NEW FAMILY BUSINESSES: STRATEGIES FOR SEPARATING THE COMPANY FROM THE FAMILY	Family businesses provide a feeling of togetherness, however, differences in opinion can wreak havoc on relationships. Participants will learn strategies for separating the company from the family.	LBM138 (MILTON) Landscape Ontario, Milton Tues, February 8 9:00 a.m. - 3:30 p.m. Instructor: Phil Kriszenfeld, Transitions Mediation and Consulting Group	LO Member: \$138 Potential Member: \$264
NEW CREATING YOUR SALES SUCCESS FORMULA CLHM	Sales can be fun and effective! Participants will practice how to effectively qualify and close sales with an "equal business stature" that maximizes time and results.	LBM141 (MILTON) Landscape Ontario, Milton Fri, February 11 9:00 a.m. - 2:00 p.m. Instructor: Andrew Wall, Sandler Training	LO Member: \$106 Potential Member: \$203
NEW HOW TO BUILD A HAPPY, PRODUCTIVE TEAM CLHM	Managers and team leaders will learn how to get the best from their team through a system and process that accomplishes these objectives.	LBM142 (MILTON) Landscape Ontario, Milton Tues, February 22 9:00 a.m. - 2:00 p.m. Instructor: Andrew Wall, Sandler Training	LO Member: \$106 Potential Member: \$203
NEW IS YOUR MONEY SLIPPING THROUGH YOUR FINGERS?	Financials, staying on top of them, reviewing them regularly and knowing how to interpret them will lead to less stress, better decision making, and more profit.	LBM144 (MILTON) Landscape Ontario, Milton Wed, February 23 9:00 a.m. - 2:00 p.m. Instructor: Grant Harrison, Nextra Consulting	LO Member: \$106 Potential Member: \$203
NEW BUILDING WINNING TEAMS: HIRE THEM, COACH THEM AND TRAIN THEM TO SUCCEED! CLHM	Learn how to get the most out of team members, while keeping them engaged, motivated and productive.	LBM139 (MILTON) Landscape Ontario, Milton Thurs, February 24 9:00 a.m. - 3:30 p.m. Instructor: Rob Redden, In-Lite Design Corporation	LO Member: \$138 Potential Member: \$264

Refer to [HortTrades.com/Seminars](https://horttrades.com/Seminars) for complete seminar details.

BUSINESS DEVELOPMENT

SEMINAR	DESCRIPTION	LOCATION AND INFORMATION	FEE (HST not included)
NEW 5 COMMON MISTAKES BUSINESS OWNERS MAKE	Join us for Build a Better Business where you'll learn about five common mistakes business owners make and what to do about them.	LBM145 (MILTON) Landscape Ontario, Milton Tues, March 1 9:00 a.m. - 2:00 p.m. Instructor: Grant Harrison, Nextra Consulting	LO Member: \$106 Potential Member: \$203
SUPERVISOR RESPONSIBILITIES AND DUE DILIGENCE CLHT CLHM	Supervisors play a critical role in workplace health and safety. This seminar is designed to equip supervisors with the knowledge to understand their legal duties, their role as a leader and the key concept of due diligence.	LSO28 (MILTON) Landscape Ontario, Milton Fri, March 4 9:00 a.m. - noon (Lunch not included) Instructor: Kristin Hoffman, WSPS	LO Member: \$168.50 Potential Member: \$275
NEW ESTABLISH A SOLID BUSINESS FOUNDATION: A RETAILER'S PERSPECTIVE	Attendees will gain insight on how to navigate some key business areas, along with ideas to adapt to today's new normal.	LBM140 (MILTON) Landscape Ontario, Milton Thurs, March 10 9:00 a.m. - 3:30 p.m. Instructor: Art Vanden Enden, Sheridan Nurseries	LO Member: \$138 Potential Member: \$264
THE EFFECTIVE SUPERVISOR: BUILDING STRATEGIES FOR SUCCESS CLHT CLHM ISA	This seminar goes beyond awareness of the legal roles and responsibilities of supervisors, and engages participants in identifying real-life challenges and solutions.	LSO20 (MILTON) Landscape Ontario, Milton Tues.-Wed, March 15-16 9:00 a.m. - 3:30 p.m. Instructor: Kristin Hoffman, WSPS	LO Member: \$434.50 Potential Member: \$715
NEW PROFITABILITY BEGINS BEFORE 7 A.M.: THE KEY TO A SUCCESSFUL MORNING ROLLOUT CLHM	Looking for ways to tighten your company's morning routine? Get tips to improve efficiency in your yard and get crews on the road and to clients' properties faster.	LBM136 (MILTON) Landscape Ontario, Milton Thurs, March 17 9:00 a.m. - 3:30 p.m. Instructor: Greg Wildeboer, Whispering Pines Landscaping	LO Member: \$138 Potential Member: \$264
NEW LEADING YOUR COMPANY TO GROW AND PROSPER CLHM	Business growth happens when a clear plan is created, shared and executed. Do you have one? This seminar will help owners and managers gain the insights on how to create one.	LBM143 (MILTON) Landscape Ontario, Milton Fri, March 18 9:00 a.m. - 2:00 p.m. Instructor: Andrew Wall, Sandler Training	LO Member: \$106 Potential Member: \$203

Refer to [HortTrades.com/Seminars](https://horttrades.com/Seminars) for complete seminar details.

CERTIFICATION

SEMINAR	DESCRIPTION	LOCATION AND INFORMATION	FEE (HST not included)
CERTIFIED IRRIGATION TECHNICIAN PREP SEMINAR (CIT) WSIP	This seminar will help prepare individuals wishing to take the Irrigation Association's CIT exam.	LI010 (MILTON) Landscape Ontario, Milton Mon-Tues, April 4-5 9:00 a.m. - 3:30 p.m. Instructor: Lorne Haveruk, CLWM, CID, CIC, CLIA, WCP	LO Member: \$275 Potential Member: \$528

EQUIPMENT

NEW MASTERING COMMERCIAL VEHICLE LAWS AND THE ROADSIDE INSPECTION	This two-part seminar will provide the information needed to stay compliant with commercial vehicle legislation in Ontario, including how to navigate the CVOR system and offer hands-on demonstrations of a standard roadside inspection.	LE009 (MILTON) Landscape Ontario, Milton Same seminar, two dates offered: A) Mon, March 7 9:00 a.m. - 2:00 p.m. (approx.) B) Wed, March 9 9:00 a.m. - 2:00 p.m. (approx.) Instructor: Representative from Tri-Shield	LO Member: \$106 Potential Member: \$203
OWNER/OPERATOR EQUIPMENT SEMINAR CLHT	This seminar is designed for the landscape contractor equipment operator and/or owner. Participants are instructed in safety, maintenance theory and practice as it relates to the most popular landscape contractor equipment.	LE008 (MILTON) WPE Landscape Equipment, 151 Hwy 5, Dundas For directions only, call 905-628-3055 Wed, February 23 9:00 a.m. - 3:30 p.m. (Lunch not included) Instructor: Representative from WPE Equipment	LO Member: \$138 Potential Member: \$264

Refer to **HortTrades.com/Seminars** for complete seminar details.

EQUIPMENT

SEMINAR	DESCRIPTION	
CHAINSAW TRAINING CLHT	To promote the safety of landscape professionals using chainsaws, the MLTSD requires training on safe chainsaw operation by a competent instructor. This two-day seminar satisfies that requirement.	
	LOCATION AND INFORMATION	FEE (HST not included)
	LS004-LN (LONDON) - Location TBA (refer to website) Sat-Sun, March 26-27 9:00 a.m. - 4:00 p.m. (Lunch not included) Instructor: Rick MacKinnon, Davey Tree Service	LO Member: \$275 Potential Member: \$528
	LS004 (MILTON) - Landscape Ontario, Milton Same seminar, two dates offered: A) Mon-Tues, March 28-29 B) Thurs-Fri, March 31-April 1 Instructors: Davey Tree Service representative, Total Rescue representative DETAILS FOR MILTON Day 1, 9:00 a.m. - 3:30 p.m. (Lunch included) Day 2, 9:00 a.m. - noon approx. (Lunch not included)	LO Member: \$200 Potential Member: \$385
COMPACT EXCAVATOR SAFE OPERATOR TRAINING	This seminar covers the fundamentals of daily maintenance, machine controls, safe operating practices/techniques and legal considerations for compact excavators found on many job-sites.	
	LOCATION AND INFORMATION	FEE (HST not included)
	LE004-DU (OSHAWA) Herc Rentals, 411 Bloor St. West, Oshawa For directions only, call 905-404-8411 Tues, March 15	LO Member: \$190 Potential Member: \$265
	LE004 (ETOBICOKE) Herc Rentals, 35 Claireville Dr., Etobicoke For directions only, call 416-679-4173 Same seminar, two dates offered: A) Wed, March 23 B) Wed, April 6	
	LE004-GH (HAMILTON) Herc Rentals, 2418 Barton St. East, Hamilton For directions only, call 905-545-2233 Mon, March 28 DETAILS FOR ALL LOCATIONS Instructor: Bruce Hannah, Herc Rentals 9:00 a.m. - 2:00 p.m. (approx.) (Lunch not included)	

Refer to [HortTrades.com/Seminars](https://horttrades.com/Seminars) for complete seminar details.

EQUIPMENT		
SEMINAR	DESCRIPTION	
SKID STEER CERTIFICATION TRAINING CLHT	This is a seminar for individuals who want to learn how to operate a skid steer safely and correctly. Instruction will include basic operator safety, inspection, and equipment features in accordance with applicable OHSA and regulations and equipment manufacturers' guidance.	
	LOCATION AND INFORMATION	FEE <i>(HST not included)</i>
	LS003-DU (OSHAWA) Herc Rentals, 411 Bloor St. West, Oshawa For directions only, call 905-404-8411 Thurs, March 17	LO Member: \$190 Potential Member:\$265
	LS003 (ETOBICOKE) Herc Rentals, 35 Claireville Dr., Etobicoke For directions only, call 416-679-4173 Same seminar, two dates offered: A) Thurs, March 24 B) Tues, April 5	
	LS003-GH (HAMILTON) Herc Rentals, 2418 Barton St. East, Hamilton For directions only, call 905-545-2233 Tues, March 29	
	LS003-KW (CAMBRIDGE) Herc Rentals, 500 Collier Macmillan Dr., Cambridge For directions only, call 519-624-7940 Wed, March 30	
	DETAILS FOR ABOVE LOCATIONS 9:00 a.m. - 2:00 p.m. (Lunch not included) Instructor: Bruce Hannah, Herc Rentals	
	LS003-LN (THAMESFORD) Huron Tractor, 37 Elgin Rd., Thamesford For directions only, call 519-285-3845 Wed, March 23 9:00 a.m. - 2:00 p.m. (Lunch not included) Instructor: Representative from Martin's Lift Truck Service	LO Member: \$135 Potential Member:\$190

Refer to [HortTrades.com/Seminars](https://horttrades.com/Seminars) for complete seminar details.

GROUNDS MAINTENANCE

SEMINAR	DESCRIPTION	LOCATION AND INFORMATION	FEE (HST not included)
MAINTENANCE AND SAFETY OF TOOLS AND EQUIPMENT CLHT	<p>This day will benefit new employees and is particularly suited for those with some industry experience. Participants should come prepared for some hands-on learning.</p>	<p>LM202 (MILTON) WPE Landscape Equipment, 3165 Unity Dr., Unit 4, Mississauga For directions only, call 905-569-2055 Mon, February 28 9:00 a.m. - 3:30 p.m. (Lunch not included) Instructor: Representative from WPE Equipment</p>	<p>LO Member: \$138 Potential Member: \$264</p>
ESSENTIAL GROUNDS MAINTENANCE PRACTICES CLHT CLHM IPM	<p>For the novice, day two of Grounds Maintenance Week offers participants the opportunity to experience everything the grounds maintenance profession encompasses.</p>	<p>LM203 (MILTON) Landscape Ontario, Milton Tues, March 1 9:00 a.m. - 3:30 p.m. Instructor: Bruce Peart, Growing Concerns</p>	<p>LO Member: \$138 Potential Member: \$264</p>
FUNDAMENTALS OF CUSTOMER SERVICE AND SAFETY CLHT CLHM	<p>Vital to a successful operation, this seminar covers the customer service and safety aspects of working in the ground's maintenance field.</p>	<p>LM201 (MILTON) Landscape Ontario, Milton Wed, March 2 9:00 a.m. - 3:30 p.m. Instructor: Jeff Lowartz CLHT, CSL Group</p>	<p>LO Member: \$138 Potential Member: \$264</p>
ANNUALS AND PERENNIALS IN GROUNDS MAINTENANCE CLHT CLD	<p>Day four involves the basics of plant identification (annuals and perennials), how to plan for site planting, a review of locations and conditions as well as care needs. Note: There is some hands-on learning.</p>	<p>LM204 (MILTON) Landscape Ontario, Milton Thurs, March 3 9:00 a.m. - 3:30 p.m. Instructor: Bruce Peart, Growing Concerns</p>	<p>LO Member: \$193 Potential Member: \$275</p>
GROUNDS MAINTENANCE TURF, PRUNING AND GENERAL STANDARDS CLHT	<p>Wrapping up the week-long program, day five will go over the art of planting, pruning and turfgrass. Weather permitting, participants should bring secateurs for outdoor pruning.</p>	<p>LM205 (MILTON) Landscape Ontario, Milton Fri, March 4 9:00 a.m. - 3:30 p.m. Instructor: Bruce Peart, Growing Concerns</p>	<p>LO Member: \$138 Potential Member: \$264</p>

Refer to [HortTrades.com/Seminars](https://horttrades.com/Seminars) for complete seminar details.

IRRIGATION

SEMINAR	DESCRIPTION	LOCATION AND INFORMATION	FEE (HST not included)
IRRIGATION SYSTEMS: THE ABCS CLHT CIT WSP	An introduction to irrigation systems for landscape applications. Emphasis is placed on irrigation components, what they look like, how they work and how parts go together to create a system.	LI003 (MILTON) Landscape Ontario, Milton Mon, March 21 9:00 a.m. - 3:30 p.m. Instructor: Lorne Haveruk CLWM, CID, CIC, CLIA, WCP	LO Member: \$138 Potential Member: \$264
INSTALLATION STEPS AND PRACTICES: BUILD A SYSTEM CIC WSP	By day's end you will have helped construct a PVC rotor system, a poly pipe spray system and a basic drip (low volume) irrigation station — all operated electrically from the controller you will install with a rain sensor that you wire up and test.	LI005 (MILTON) Landscape Ontario, Milton Tues, March 22 9:00 a.m. - 3:30 p.m. Instructor: Lorne Haveruk CLWM, CID, CIC, CLIA, WCP	LO Member: \$138 Potential Member: \$264
IRRIGATION COMPONENT REPAIR AND TROUBLESHOOTING CLHT CIC WSP	This seminar is for both new and experienced irrigation personnel, covering the most common problems and how to analyze them on the job.	LI006 (MILTON) Landscape Ontario, Milton Wed, March 23 9:00 a.m. - 3:30 p.m. Instructor: Lorne Haveruk CLWM, CID, CIC, CLIA, WCP	LO Member: \$138 Potential Member: \$264
CONTROLLERS, SENSORS AND SCHEDULING CLHT CIC WSP	Participants will learn about basic scheduling of an irrigation controller (timer) and how to program the scheduling problems that occur many times throughout the day.	LI007 (MILTON) Landscape Ontario, Milton Thurs, March 24 9:00 a.m. - 3:30 p.m. Instructor: Lorne Haveruk CLWM, CID, CIC, CLIA, WCP	LO Member: \$138 Potential Member: \$264
ELECTRICAL TROUBLESHOOTING FOR IRRIGATION SYSTEMS CLHT WSP	This hands-on seminar will cover what you need to know, and the equipment needed to analyze, troubleshoot, locate problems, repair them and get things working.	LI020 (MILTON) Landscape Ontario, Milton Fri, March 25 9:00 a.m. - 3:30 p.m. Instructor: Lorne Haveruk CLWM, CID, CIC, CLIA, WCP	LO Member: \$138 Potential Member: \$264
BIDDING AND ESTIMATING: HOW TO RUN PROFITABLE IRRIGATION PROJECTS CLHM WSP	This seminar will help participants learn how to do material takeoffs, work out overhead costs, and steps required when submitting a price for residential and commercial irrigation work.	LI011 (MILTON) Landscape Ontario, Milton Mon, March 28 9:00 a.m. - 3:30 p.m. Instructor: Lorne Haveruk CLWM, CID, CIC, CLIA, WCP	LO Member: \$138 Potential Member: \$264

Refer to [HortTrades.com/Seminars](https://horttrades.com/Seminars) for complete seminar details.

IRRIGATION			
SEMINAR	DESCRIPTION	LOCATION AND INFORMATION	FEE <i>(HST not included)</i>
IRRIGATION BOOT CAMP WSIP	This fast-paced, hands-on seminar is an overview for those with at least two seasons of irrigation experience or have attended seminar LI003.	LI026 (MILTON) Landscape Ontario, Milton Same seminar, two dates offered: A) Wed-Thurs, February 16-17 9:00 a.m. - 3:30 p.m. B) Tues-Wed, March 29- 30 9:00 a.m. - 3:30 p.m. Instructors: Steve Hernandez CIT, Eco Springs Irrigation Lorne Haveruk CLWM, CID, CIC, CLIA, WCP	LO Member: \$275 Potential Member: \$528



WATER SMART
IRRIGATION PROFESSIONAL

The **Water Smart Irrigation Professional (WSIP) Certification Program provides contractors with the tools and knowledge to promote water efficient irrigation practices to their clients.**

The program is available to contractors across Ontario providing residential and/or commercial irrigation services to clients.

PLEASE VISIT [HORTTRADES.COM/WSIP](https://horttrades.com/WSIP) TO LEARN MORE



Refer to [HortTrades.com/Seminars](https://horttrades.com/Seminars) for complete seminar details.

IRRIGATION

SEMINAR	DESCRIPTION	LOCATION AND INFORMATION	FEE (HST not included)
IRRIGATION DESIGN: AN INTRODUCTION CID WSIP	This hands-on introductory seminar is for those wanting to learn how to design an irrigation system.	LI015 (MILTON) Landscape Ontario, Milton Thurs, March 31 9:00 a.m. - 3:30 p.m. Instructor: Lorne Haveruk CLWM, CID, CIC, CLIA, WCP	LO Member: \$138 Potential Member: \$264
DRIP IRRIGATION: WATER CONSERVATION WISE CLHT CIC WSIP	Participants will learn what is involved in designing a low volume irrigation system or station along with basic irrigation design principles.	LI023 (MILTON) Landscape Ontario, Milton Fri, April 1 9:00 a.m. - 3:30 p.m. Instructor: Lorne Haveruk CLWM, CID, CIC, CLIA, WCP	LO Member: \$138 Potential Member: \$264

INTEGRATED PEST MANAGEMENT (IPM)

NEW NEMATODES: THE UNDERCOVER HEROES OF LAWN CARE CLHT	This seminar focuses on natural controls for various turf grass pests, debunking the myth that natural controls are ineffective.	TM014 (MILTON) Landscape Ontario, Milton Fri, March 18 9:30 a.m. - 12:30 p.m. (Lunch not included) Instructor: John Robertson, Natural Insect Control	LO Member: \$63.50 Potential Member: \$121.80
NEW IPM FOR WOODY PLANTS: BLIGHTS AND OVERSIGHTS CLHT ISA IPM	Wish you were more effective at detecting, identifying and managing disease and abiotic disorders on outdoor woody ornamentals? Then this is the seminar for you!	TM012 (MILTON) Landscape Ontario, Milton Wed, March 30 9:00 a.m. - 3:30 p.m. Instructor: Jennifer Llewellyn OMAFRA	LO Member: \$149 Potential Member: \$275
NEW IPM FOR WOODY PLANTS: BUGS AND THUGS CLHT ISA IPM	This popular seminar will give you a much greater understanding and familiarity of Ontario woody plant pests and a solid set of resources that will make you your clients "Guru."	TM013 (MILTON) Landscape Ontario, Milton Wed, April 6 9:00 a.m. - 3:30 p.m. Instructor: Jennifer Llewellyn OMAFRA	LO Member: \$149 Potential Member: \$275

Refer to **HortTrades.com/Seminars** for complete seminar details.

LANDSCAPE CONSTRUCTION

SEMINAR	DESCRIPTION	LOCATION AND INFORMATION	FEE <i>(HST not included)</i>
NEW WORKING WITH NATURAL STONE	This hands-on two-day introductory seminar is suitable for those seeking greater insight and skill development in the art of natural stone.	LC067 (MILTON) Landscape Ontario, Milton Wed-Thurs, February 2-3 9:00 a.m. - 3:30 p.m. Instructor: Menno Braam, Whistling Dwarf Stonework	LO Member: \$385 Potential Member: \$550
PAVING YOUR WAY TO PERFECT INTERLOCK CLHT	This hands-on seminar is geared toward individuals looking to develop or improve the practical skills of paving stone installation.	LC014 (MILTON) Landscape Ontario, Milton Mon, February 7 9:00 a.m. - 3:30 p.m. Instructor: Ryan Heath CLHM, CLHT, Betz Pools Ltd.	LO Member: \$195 Potential Member: \$275
FUNDAMENTALS OF WORKING WITH FLAGSTONE	This hands-on, two-day introductory seminar is suitable for those seeking greater insight and skill development in the art of flagstone.	LC068 (MILTON) Landscape Ontario, Milton Wed-Thurs, February 9-10 9:00 a.m. - 3:30 p.m. Instructor: Menno Braam, Whistling Dwarf Stonework	LO Member: \$385 Potential Member: \$550
PRECAST RETAINING WALLS FROM THE GROUND UP CLD	Learn all there is to know about building retaining walls during this two-day, hands-on seminar.	LC040 (MILTON) Landscape Ontario, Milton Mon-Tues, February 14-15 9:00 a.m. - 3:30 p.m. Instructor: Ryan Heath CLHM, CLHT, Betz Pools Ltd.	LO Member: \$385 Potential Member: \$550
LANDSCAPE LIGHTING 101	This seminar is for the beginner or novice who is interested in learning more about landscape lighting, or thinking of adding landscape lighting to his business offering.	LC059 (MILTON) Landscape Ontario, Milton Tues, March 15 9:00 a.m. - 3:30 p.m. Instructor: John Higo, Turf Care Products Canada	LO Member: \$138 Potential Member: \$264
LASER LEVELS, SPOT AND JOB SITE ELEVATION LAYOUTS CLD CLHT	Participants will practice using laser levels to gather information to be used in-class to translate into a site plan. Participants should dress for outdoor site measurement and spot elevation collection.	LC058 (MILTON) Landscape Ontario, Milton Tues, March 22 9:00 a.m. - 3:30 p.m. Instructor: Tony Lombardi CLD, Dr. Landscape	LO Member: \$192.50 Potential Member: \$275

Refer to [HortTrades.com/Seminars](https://horttrades.com/seminars) for complete seminar details.

LANDSCAPE DESIGN

SEMINAR	DESCRIPTION	LOCATION AND INFORMATION	FEE <i>(HST not included)</i>
SKETCHUP: AN INTRODUCTION	This two-day seminar introduces new and inexperienced users to the basics of SketchUp, as applied to the activities of a landscape designer.	LD024 (MILTON) Landscape Ontario, Milton Wed-Thurs, February 2-3 9:00 a.m. - 3:30 p.m. Instructor: Mansoor Ma, LANDinc	LO Member: \$275 Potential Member: \$528
SKETCHUP: AN INTERMEDIATE SEMINAR	This seminar is a follow-up to the Introductory SketchUp seminar, or for users who can competently model and present a simple landscape design.	LD026 (MILTON) Landscape Ontario, Milton Wed-Thurs, February 9-10 9:00 a.m. - 3:30 p.m. Instructor: Mansoor Ma, LANDinc	LO Member: \$275 Potential Member: \$528
NEW LANDSCAPE DESIGNER'S STUDIO – PRINCIPLES CLD	This seminar is for new landscape and garden designers that would like some formal training in design.	LD047 (MILTON) In-class: Landscape Ontario, Milton OL064 (Zoom) Online Learning: Zoom link will be sent prior to session date Thurs, February 24 9:00 a.m. - 3:30 p.m. Instructor: Beth Edney CLD, Designs by the Yard	IN CLASS: LO Member: \$138 Potential Member: \$264 ONLINE: LO Member: \$118 Potential Member: \$244
IMPORTANT: This is a blended seminar/session. Participants can attend in-class at LO or online via Zoom. Refer to HortTrades.com/seminars or HortTrades.com/professional-development-online for full details.			
INTRODUCTION TO DYNASCAPE	This seminar is intended for landscape designers or contractors of all experience levels.	LD025 (MILTON) Landscape Ontario, Milton Mon, February 28 9:00 a.m. - 3:30 p.m. Instructor: Beth Edney CLD, Designs by the Yard	LO Member: \$138 Potential Member: \$264

Refer to [HortTrades.com/Seminars](https://horttrades.com/Seminars) for complete seminar details.

LANDSCAPE DESIGN

SEMINAR	DESCRIPTION	LOCATION AND INFORMATION	FEE (HST not included)
NEW AN INTRODUCTION TO REALTIME LANDSCAPING ARCHITECT PROGRAM	This seminar is an introduction program. It combines the functions of 2D programs, such as AutoCAD and DynaScape, and 3D programs, such as SketchUp, producing both types of the images simultaneously. Some experience with this is helpful but not required.	LD024 (MILTON) Landscape Ontario, Milton Tues-Wed, March 8-9 9:00 a.m. - 3:30 p.m. Instructor: Kari Tolppanen, Lawrence Park Complete Garden Centre	LO Member: \$275 Potential Member: \$528

become certified



fusion landscape
PROFESSIONAL

The **Fusion Landscape Professional (FLP)** Certification Program provides professionals with the knowledge to design, install and maintain water-efficient landscapes that optimize lot level stormwater management and enhance the environment.

The program is available to professionals who provide landscape services to residential clients located across Ontario

PLEASE VISIT [HORTTRADES.COM/FUSION](https://horttrades.com/fusion)



Refer to [HortTrades.com/Seminars](https://horttrades.com/Seminars) for complete seminar details.

PLANTS

SEMINAR	DESCRIPTION	LOCATION AND INFORMATION	FEE (HST not included)
PERENNIAL ID: THE DESIRED AND THE UNINVITED CLHT	This seminar will demystify the identification of perennials and weeds in the landscape.	LPO56 (MILTON) Landscape Ontario, Milton Wed, February 23 9:00 a.m. – 3:30 p.m. Instructor: Jodi Healy, Horticulturalist	LO Member: \$138 Potential Member: \$264
NEW CREATING CONTAINERS THAT PERFORM CLHT	A seminar for those who have an interest in container gardening or are looking to start. Exploring exciting combinations, drought tolerance, pest tolerance, different light exposure, colour combinations, texture, and size.	LPO57 (MILTON) Landscape Ontario, Milton Fri, March 11 9:00 a.m. – noon (Lunch not included) Instructor: Rodger Tschanz, University of Guelph	LO Member: \$63.50 Potential Member: \$121.80
NEW TEXTURE WORKHORSES: SEDGES AND GRASSES CLHT	Grasses offer interest throughout the year, increase biodiversity and offer sound and movement. Horizons will be broadened.	LPO58 (MILTON) Landscape Ontario, Milton Mon, March 14 9:00 a.m. – noon (Lunch not included) Instructor: Sean James, FLP, Sean James Consulting and Design	LO Member: \$63.50 Potential Member: \$121.80
NEW INVASIVE SPECIES IN ONTARIO CLHT CLD	In this seminar we will look at how to identify common invasive species in Ontario by comparing them to their native look alike.	LPO59 (MILTON) Landscape Ontario, Milton Fri, March 25 9:00 a.m. – noon (Lunch not included) Instructor: Jodi Healy, Horticulturalist	LO Member: \$63.50 Potential Member: \$121.80

SAFETY AND FIRST AID

SAFETY, HEALTH AND THE LAW CLHM	This one-day seminar is designed to increase awareness and working knowledge of Ontario's <i>Occupational Health and Safety Act</i> and regulations.	LS033 (MILTON) Landscape Ontario, Milton Thurs, February 17 9:00 a.m. – 3:30 p.m. Instructor: Kristin Hoffman, WSPS	LO Member: \$240 Potential Member: \$275
--	--	---	---

Refer to **HortTrades.com/Seminars** for complete seminar details.

SAFETY AND FIRST AID

SEMINAR	DESCRIPTION	LOCATION AND INFORMATION	FEE (HST not included)
STANDARD FIRST AID WITH CPR LEVEL C CLHT CLD CLHM ISA FLP	Practical first aid course meets government requirements and prepares participants to administer first aid for common landscape injuries. Every landscape crew must have one person with first aid training to assist injured workers. Participants should bring a blanket.	LS007 (MILTON) Landscape Ontario, Milton Mon-Tues, April 4-5 8:30 a.m. - 4:30 p.m. Instructor: Representative from SAJE VitalSigns	LO Member: \$160 Potential Member: \$292
EMERGENCY FIRST AID, CPR C AND AUTOMATED EXTERNAL DEFIBRILLATION (AED) CERTIFICATION CLHT CLD CLHM ISA FLP	Designed to give participants a general overview of first aid. Participants will learn how to think and react in an emergency until medical help arrives. This seminar is suitable for those working as first responders in their workplace.	LS026 (MILTON) Landscape Ontario, Milton Wed, April 6 8:30 a.m. - 4:30 p.m. Instructor: Representative from SAJE VitalSigns	LO Member: \$110 Potential Member: \$236
WHMIS 2015 CLHT ISA	By law, all workers must receive Workplace Hazardous Material Information System (WHMIS) training every year under the <i>Occupational Health and Safety Act</i> . Participants will come away able to identify and apply key responsibilities, keeping them current in their work environment.	LS023 (MILTON) Landscape Ontario, Milton Thurs, April 7 9:00 a.m. - 10:30 a.m. (approx.) (Lunch not included) Instructor: Representative from SAJE VitalSigns	LO Member: \$52 Potential Member: \$74

TREES

INTRODUCTION TO TREE AND SHRUB PRUNING CLHT	This seminar includes both classroom and hands-on instruction outdoors to develop skill and confidence in pruning basics.	LA003 (MILTON) Landscape Ontario, Milton Same seminar, two dates offered: A) Fri, March 11 9:00 a.m. - 3:30 p.m. B) Fri, April 1 9:00 a.m. - 3:30 p.m. Instructor: Todd Irvine MFC, MA, ISA Certified Arborist	LO Member: \$138 Potential Member: \$264
--	---	---	---


Refer to [HortTrades.com/Seminars](https://horttrades.com/seminars) for complete seminar details.

TREES

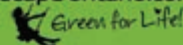
SEMINAR	DESCRIPTION	LOCATION AND INFORMATION	FEE (HST not included)
BELOW THE GROUND: INTRODUCTION TO SOILS AND TREE ROOTS CLHT CLD FLP ISA	An introductory seminar for anyone working with trees who wants to understand how roots grow and the importance of healthy soils.	LA005 (MILTON) Landscape Ontario, Milton Mon, March 14 9:00 a.m. - 3:30 p.m. Instructor: Todd Irvine MFC, MA, ISA Certified Arborist	LO Member: \$138 Potential Member: \$264
NEW CANKERS: WHAT THEY ARE AND WHY YOU SHOULD CARE CLHT ISA	Learn to identify, understand and mitigate cankers — a common fungal problem in nurseries, new plantings and mature trees.	LA011 (MILTON) Landscape Ontario, Milton Thurs, March 17 9:00 a.m. - 3:30 p.m. Instructor: Kyle McLoughlin, Ironwood Arboricultural Solutions	LO Member: \$138 Potential Member: \$264
TREES AND SHRUBS: PLANTING AND MAINTENANCE PRACTICES CLHT CLD ISA	This seminar explores how to maintain trees and shrubs so they perform well. An introduction to tree and shrub biology is followed by a discussion of main stresses, including drought, construction damage, soil compaction and lack of nutrients.	LA001 (MILTON) Landscape Ontario, Milton Mon, March 21 9:00 a.m. - 3:30 p.m. Instructor: Todd Irvine MFC, MA, ISA Certified Arborist	LO Member: \$138 Potential Member: \$264

WATER GARDENING

NEW HAVE YOU EVER THOUGHT OF ADDING A WATER FEATURE?	This half-day seminar will discuss the pros and cons of various types of water features.	LD048 (MILTON) Landscape Ontario, Milton Thurs, March 17 9:00 a.m. - noon (Lunch not included) Instructor: Robert Pavlis, Aspen Grove Gardens	LO Member: \$63.50 Potential Member: \$121.80
---	--	---	--



landscapeontario.com



IPM SYMPOSIUM

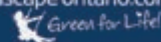
THURSDAY, JANUARY 6, 2022

VIRTUAL

LandscapeOntario.com/IPM-Symposium-2022



landscapeontario.com



LANDSCAPE DESIGNERS CONFERENCE

TUESDAY, JANUARY 25, 2022

VIRTUAL

[LandscapeOntario.com/
Landscape-Designer-Conference-2022](https://LandscapeOntario.com/Landscape-Designer-Conference-2022)

REGISTRATION FORM



PROFESSIONAL DEVELOPMENT SEMINARS 2022

THIS FORM MAY BE COPIED. PLEASE PRINT CLEARLY.

FEE DETAILS

IN-CLASS SEMINARS

LO Members \$138*
Potential Members \$264*

ONLINE SESSIONS

LO Members \$45*
Potential Members \$60*

*UNLESS NOTED OTHERWISE
IN THE DESCRIPTION.

REGISTER ONLINE AT

HortTrades.com/Seminars

NOTE:

*Online registrations only will receive an automatically generated receipt.

*Others can safely assume they are registered if they have paid in full.

*Confirmations are not sent out.

*You will be notified if a seminar/session is changed, cancelled or full

**Register by
Dec. 31/21 for seminars
and sessions held
Jan. 1, 2022 through
April 2022, and
automatically receive
a 10% discount!**

Mail payment to:
**Landscape Ontario
Pro Dev Seminars**
7856 Fifth Line South
Milton ON L9T 2X8

ATTENDEE OR
COMPANY NAME _____

ADDRESS _____

CITY _____ PROV _____

POSTAL CODE _____ BEST PHONE # _____

E-MAIL _____

IS YOUR BUSINESS A LANDSCAPE ONTARIO MEMBER? ____ YES ____ NO

ATTENDEE NAME	COURSE CODE	DATE	FEE
SUBTOTAL \$			
HST \$			
TOTAL \$			

PAYMENT: Registration forms must be accompanied with payment. **DO NOT SEND CASH.**
SEMINAR/SESSION FEES ARE NON REFUNDABLE. If an event occurs that prevents you from attending, please send a replacement.

☐ **VISA** _____
☐ **MasterCard** Card Number
☐ **AMEX**
☐ **Cheque** /
 (Payable to Expiry Date Name on Card
 Landscape _____
 Ontario) _____
 Cardholder Signature

REGISTRATION INFORMATION

Important information regarding fees, locations, start times and registration

- Seminars run from 9:00 a.m. to 3:30 p.m. and include lunch and coffee, except where noted.
Please notify us of any food allergies or dietary restrictions one week before your seminar.
- Registration fees: Unless noted in the description, seminars are \$138 (plus HST) for LO members and \$264 (plus HST) for potential members. Online sessions \$45 (plus HST) for LO members and \$60 (plus HST) for potential members. **All seminars and online learning are non-refundable.**
- LO reserves the right to change or cancel seminars and instructors at any location at any time. Age restrictions may apply to some seminars.
- Registration form must be complete and accompanied with payment for the seminar(s)/session(s) to be confirmed.
- For details regarding Landscape Ontario's accessibility policies see [*HortTrades.com/accessibility*](http://HortTrades.com/accessibility)
- Questions regarding the guide, contact Kathy at [*kathym@landscapeontario.com*](mailto:kathym@landscapeontario.com)

WAYS TO REGISTER

- Online at our website [*HortTrades.com/seminars*](http://HortTrades.com/seminars)
- Mail completed registration form and payment to:
Landscape Ontario Seminars
7856 Fifth Line South, Milton, ON L9T 2X8
1-800-265-5656

Hotel Information

Best Western Plus

161 Chisholm Drive,
Milton, ON
Phone: 905-815-3818
or 1-800-780-7234
bestwestern.com

Home2 Suites by Hilton

8490 Parkhill Drive,
Milton, ON
Phone: 289-878-3800
home2suites3.hilton.com

Holiday Inn Express and Suites Milton

2750 High Point Dr.
Milton, ON
Phone: 905-876-4955

JOIN TODAY!

HERE ARE JUST A FEW REASONS WHY YOU SHOULD JOIN **LANDSCAPE ONTARIO**:

- Professional Development Seminar Programs
- Congress Redefined
- Online Learning Opportunities
- Networking Opportunities
- Available Resources
- Symposium and Event Discounts
- Cost Saving Benefits
- Government Relations
- Subscription to *Landscape Ontario* and *Landscape Trades* magazines
- Member-only Awards of Excellence Program

For more details on these benefits and how to join go to
HortTrades.com/join-now

EVERYTHING WE OFFER HELPS YOU TO
LEARN, GROW, **THRIVE**

An initiative of

